

Treble Clef & Notation

The way we write music down has changed a great deal through the centuries but today we use a series of 5 lines called a **stave** on which to base the notes. It is rather like a washing line that we hang the musical notes on.



We have already discovered the word pitch. Pitch describes how

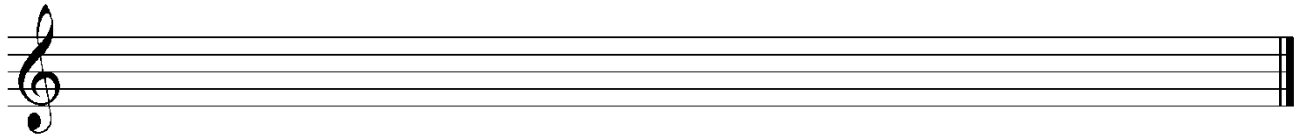


_____ or _____



a sound is. When we talk about *specific* pitches in music, we use a musical alphabet, it goes like this... C D E F G A B C

So that we know which pitch to play, we use a **stave**. A stave is a set of five lines that looks like this:



The symbol at the beginning is called a treble clef.

Learn how to draw a treble clef by tracing the dots below.



Practice drawing the treble clef below.

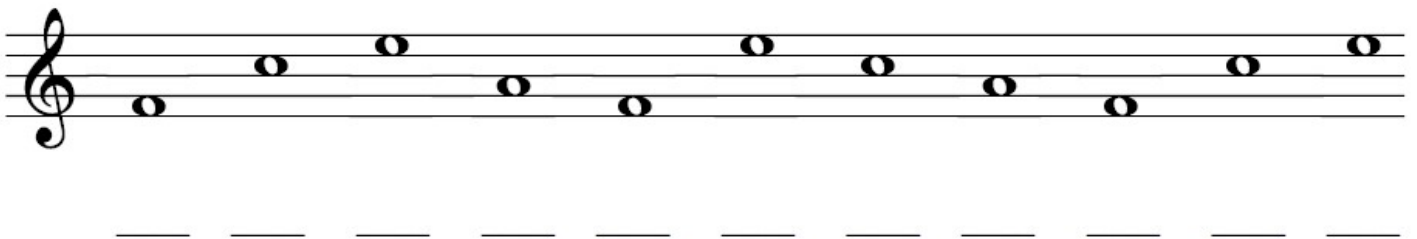
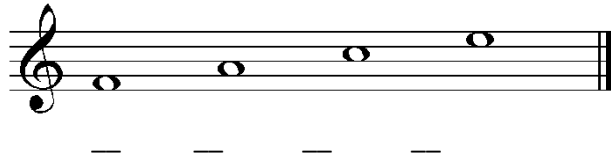


Remember the treble clef always starts on the second line from the bottom.



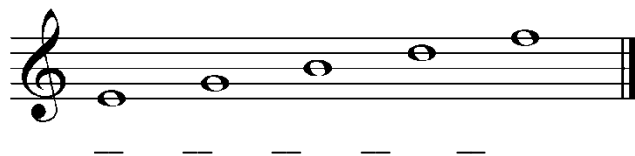
Each line and space on the staff shows a letter of the musical alphabet.

First we'll have a look at the spaces. There is an easy way to remember which notes are in the spaces – just remember *'face in the space'*.



To learn the lines, we use rhymes...

Every Good Boy Deserves Football
Elephants Go Backwards Down Fire-escapes
Every Green Bogey Deserves Flicking



Task: Make up your own rhyme to help you remember the notes on the lines.

E _____ G _____ B _____ D _____ F _____

